

Options for absorption and fluorescent detection

Options

Ez-Capture

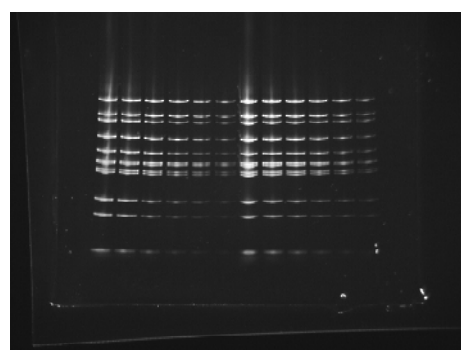
The following options are prepared for absorption and fluorescent image to using in Ez-Capture.

Please select the appropriate light source and filter for your needs.

A filter holder and 34 to 52 mm step-up ring are needed to use a 50 mm filter.

2008001	AB-6935B	Visirays-B (LED light)
2008011	AB-6935GS	Visirays-GS (LED light)
2008012	AB-6935GL	Visirays-GL (LED light)
2008060	Filter SCF-515	
2130414	YA-3 Longwave pass filter	
2130452	R60 Longwave pass filter	
2130450	Holder for 50mm filter	
2130469	Step-up ring (34 / 52 mm)	
2196160	Flat-Viewer (White LED light table)	
2130444	Neutral density 50mm filter (ND-5)	

※The AC power supplied for the optional Visirays is built into Ez-Capture so an AC adapter is not needed.



Fluorescent detection gel (Using Visirays).

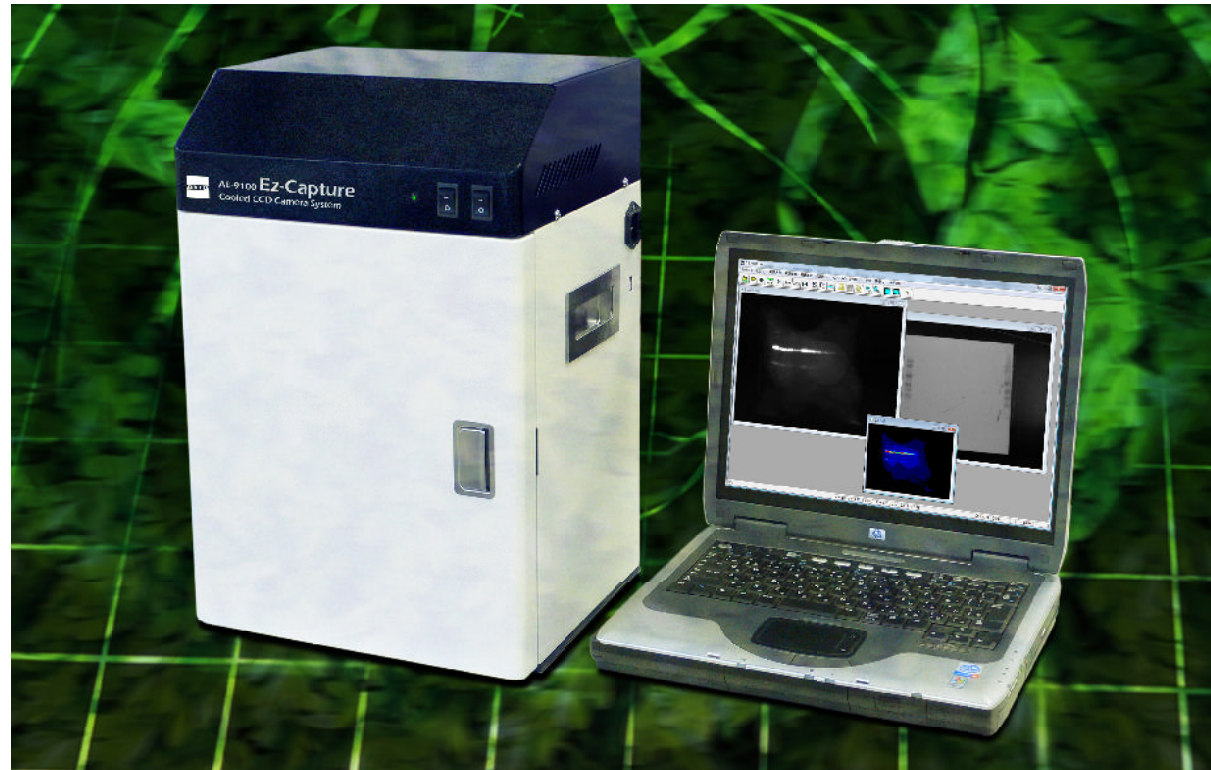
※ Visirays is optional.



Ez-Capture

Cooled CCD Camera System

Easy image capture operation



Overview

Ez-Capture

Ez-Capture, connects to a computer with USB cable to control the cooled CCD camera, Luminescent detection sample images can be used for chemiluminescent imaging after western blotting, northern blotting and other formats.

Images can be taken and saved in 16 bit TIFF format and analyzed with quantity analysis software(bundled).

Feature

Ez-Capture

Automatic exposure mode for easy capture of chemiluminescent images.

Summation mode for capturing images in long period exposures.

CCD camera is cooled to -30 degrees and operates at low noise level.

Compact installation in just 32 cm X 27.5 cm of space.

CS Analyzer software for image analysis and Image Saver software for capturing image are provided.

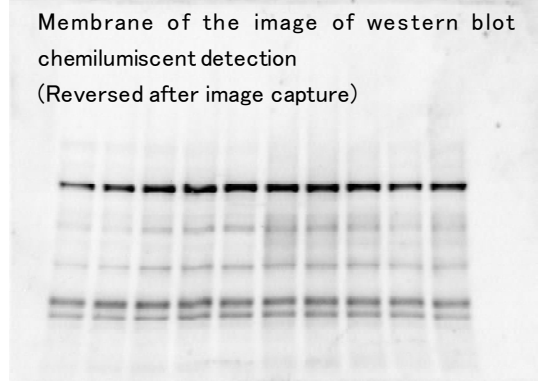
Easy image capture operation

Operation

Ez-Capture

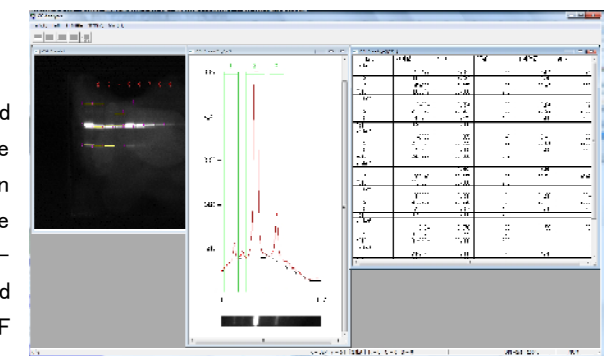
■ Capturing a sample image

Ez-Capture is a compact cooled ccd-based imaging system for chemiluminescent detection and quantification. Depending on the stage position, images of up to 16.5 X 13 cm can be taken, with image size adjustable to 7.5 X 5.5 cm. Image capture is controlled from an optional PC using Ez-Capture's automatic exposure mode. Summation mode enables the capture of images in long period exposures.



■ Analyzing an image

Ez-capture includes the CS Analyzer camera control and image analysis software setting and standard feature. These software enables contrast adjustment, print resolution setting and other image operation functions. Because the software is compatible with 8 and 16 bit file formats, various image files can be handled. CS analyzer enables fixed band quantity analysis, text data output and 16 bit TIFF output of captured images.



Specifications

Ez-Capture

Model	: AE-9100 Ez-Capture
Camera	: Peltier-cooled CCD camera.
Resolution	: 768 x 494 pixels
Fixed focus lens	: 12mm(F1.2)
Image size range	: 16.5 x 13cm(Max) / 13 x 9.5cm/ 10.5 x 8cm/ 7.5 x 5.5cm
Camera Control	: PC (Windows OS Vista, XP, 2000 compatible) Control Software included
Connect to PC	: USB2.0 (Type A-B USB Cable)
Bundled image analysis software: CS Analyzer 3	
Size:	320(W) x 275(D) x 475(H)mm
Weight:	16.0Kg(main unit only)
Power:	AC100V 50/60Hz
Include in standard set :	Main Device(including CCD camera,Lens), CS Analyzer(Software on CD), USB cable (A/B), AC cable, Manual, Tray