

Disc Gel Electrophoresis Apparatus

AE-6541 Disc Gel EP Kit (discRun)



[2321xxx] AE-6541MC Disc Gel EP Kit Including AE-6451B, 8 compact gel tubes (75 mm), 7 silicone caps, membrane, 8 membrane O-rings, and a gel casting syringe.

[2321xxx] AE-6541MM Disc Gel EP Kit AE-6541B, 8 mini gel tubes (100 mm), 7 silicone caps, membrane, 8 membrane O-rings, and a gel casting syringe.

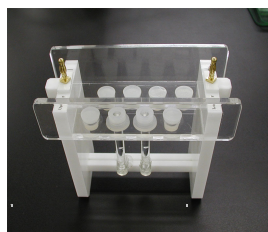
[2321xxx] AE-6541B Disc Gel EP Kit 1 electrophoresis chamber, 1 integrated power supply module, a core assembly, and a mini-compact gel tray.

Specifications

Name	AE-6541 Disk Gel EP Kit
Column size	MC: 7.5 mm O.D. x 75 mm MM: 7.5. mm O.D. x 100 mm
Gel size	2.5 mm I.D. x 50 - 75 mm
Number of gels	Up to 8 gels
Column setting	With silicone cap sealing
Buffer volume	40 mL for upper chamber, 550 mL for lower chamber
Material	Casing of power supply module: Acrylonitrile-butadiene-styrene (ABS) resin Chamber: Polycarbonate, acrylic plastic, and silicone
Electrode	Polarity can be selected manually
Power supply module	
Mode	Constant voltage, 50, 100, or 300 V
Output	Up to 40 mA
Protection	Short circuit detection
Timer	1 - 250 minutes/continuous, displaying elapsed time
Alarm	Timed up, and short circuit detection
Dimensions	164 (W) x 94 (D) x 193 (H) mm excluding AC adapter, 0.81 kg (without accessories)
AC adapter	Input: 90 - 240 VAC, 50/60Hz Output: 24 VDC, 0.7 A Dimensions: 100 (D) x 65 (W) x 31 (H) mm

*Main electrophoresis unit is common for AE-6541B, AE-6451 MC, and AE-6541MM.

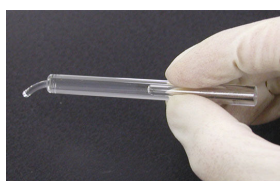
●AE-6541B does not include gel columns. Please use agarGEL precast gels for AE-6541B.



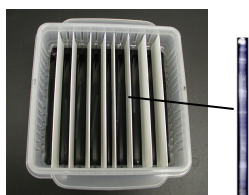
Gel setting
(Also used as a gel casting unit)



During electrification



Gel slides down when removed.



Gel tray Stabilized gel

- Two-dimensional electrophoresis can be done easily with use of a version with a power source (electricity conditions entered) and "agarGEL" precast gel and a high level of reproducibility can be obtained 150-210 min. quick electrophoresis time
- Reduced space. Takes up only that for a mini electrophoresis chamber
- Inexpensive cost
- Agarose gel specifications allowing addition of a sample with a large molecular weight or volume O'Farrell specifications also supported
- With a special gel tray and gel carrier

AE-6540 Disc Gel EP Kit



*A pair of power leads is included.

This model has replaced the AE-6451 power source to a safety cover (with lead wires).

For a list of specifications, please refer to the AE-6451 above.