

WSE -7016

# EzStandard Native

# Instruction Manual

August 21, 2025 3rd edition

## 1. Precautions for safe use of this product

To use this product safely, please read this instruction manual carefully first. Please refrain from operating the product until you fully understand the contents of this instruction manual. This instruction manual describes only how to use this product for the specified purpose. Please refrain from using the product for purposes or in ways not described in this instruction manual. If you use the product for purposes or in ways not described in this instruction manual, you are solely responsible for all necessary safety measures and unforeseen circumstances. Also, please carefully read and understand the instruction manuals of any devices you will be using at the same time.

## 2. Purpose of use

This product is **a molecular weight marker (unstained) for Native PAGE** consisting of nine protein components. It can be visualized by various staining methods (silver staining, CBB staining, etc.).

## 3. Product configuration

Name	Volume	Quantity	Storage
<b>EzStandard Native</b>	0.1 mL/ tube	5	-20°C or below

## 4. composition

Name	Main component
<b>EzStandard Native</b>	Nine protein components: 20, 45, 66, 146, 350, 480, 720, 1048, and 1236 kDa  Glycerol, bromophenol blue (BPB), buffer solution

This Product does not contain any poisonous or deleterious substances under the Poisonous and Deleterious Substances Control Law, or any substances subject to notification that exceed the exemption amounts stipulated under the Industrial Safety and Health Law or the PRTR Law. For details, please download the SDS for this product from the ATTO website (<https://www.atto.co.jp/>).

## 5. Storage

- This product should be stored frozen (-20 °C or below). If it is unopened, it is stable until the expiration date. The expiration date is printed on the outer packaging.
- After dissolving this product, dispense into appropriate amounts and store frozen (-20 °C or below). Avoid freezing and thawing during use.
- This product is stable for approximately 24 hours when refrigerated (2-10 °C).

## 6. Disposal method

- Dispose of each reagent in accordance with the disposal method of your affiliated institution.

## 7. Items required other than this product

- Electrophoresis gel
- Electrophoresis reagents (sample buffer, electrode solution, etc.)
- Electrophoresis equipment
- Small centrifuge

## 8. Precautions for use

- This product will be delivered frozen. **Please store in a freezer (-20 °C or below) immediately after delivery.**
- When dissolving this product, avoid heating or vigorous mixing and be careful not to create bubbles.
- After dissolving this product, mix well, dispense into appropriate amounts, and store in a freezer (-20 °C or below). **Avoid freezing and thawing before use.**
- This product is stable for approximately 24 hours when refrigerated (2-10 °C).
- This product is a molecular weight marker for Native PAGE. It is suitable for Native PAGE, Blue-Native PAGE, and Clear-Native PAGE using polyacrylamide gels such as u-PAGEL H. It cannot be used for SDS-PAGE.
- This product can be used with Tris-Glycine gels, Bis-Tris gels, and Tris-Acetate gels.
- When blotting with Blue-Native PAGE, the isoelectric point of the protein and the negative charge of CBB in the electrophoresis buffer may cause the protein to pass through the membrane during transfer, making it difficult to detect the band on the membrane. Please follow the instructions in the Blue-Native PAGE transfer method.

## 9. How to use

1. Dissolve **EzStandard Native** completely at room temperature (15-30 °C).
2. Mix thoroughly by tapping or inverting, taking care not to create bubbles.
3. Spin down using a small centrifuge.
4. When using mini gel electrophoresis, use 4-6µL per lane.
5. Run the gel until the dye (BPB), which indicates the electrophoretic front, reaches 5 mm above the bottom of the gel.

## 10. others

The separation pattern and molecular weight of **EzStandard Native**

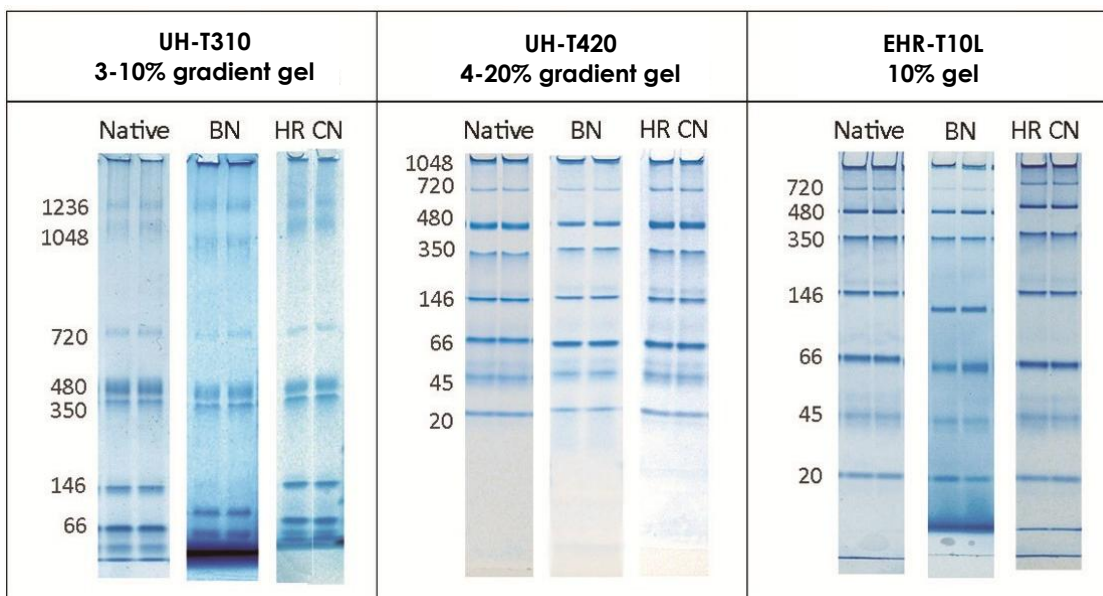
### WSE-7016

### EzStandard Native

Native : Native PAGE

BN : Blue-Native PAGE

HR- CN : High-Resolution-Clear-Native PAGE



Schematic diagram showing the mobility of **EzStandard Native**

	u-PAGEL H				e-PAGEL HR/e-PAGEL					
	5%	3-10%	3-14%	4-20%	7.5%	10%	12.5%	15%	5-20%	10-20%
0	1236			1048	1048	720	720	720	1048	
	1048					480	480	480		720
10		1236	1236	720	720	480	350	350	720	480
		1048	1048	480	480	350		146	480	350
20				350	350		146		350	146
						146	66	45	146	
30	720		720							66
				146			45			45
40		720	480		146	66		20	45	
			350							20
50	480			66			20			
	350	480		45		45			20	
60		350								
			146		66					
70				20		20				
					45					
80		146	45							
90	146	66	20							
100										

