

# EzProtein Ladder Instruction Manual

August 21, 2025 3rd edition

## 1. Precautions for safe use of this product

To use this product safely, please read this instruction manual carefully first. Please refrain from operating the product until you fully understand the contents of this instruction manual. This instruction manual describes only how to use this product for the specified purpose. Please refrain from using the product for purposes or in ways not described in this instruction manual. If you use the product for purposes or in ways not described in this instruction manual, you are solely responsible for all necessary safety measures and unforeseen circumstances. Also, please carefully read and understand the instruction manuals of any devices you will be using at the same time.

## 2. Purpose of use

This product is **a prestained molecular weight marker for SDS-PAGE** based on the Laemmli method. The mobility may vary depending on the degree of cross-linking and composition of the gel used, as well as differences in the electrode buffer.

## 3. Product configuration

Name	Volume	Quantity
<b>EzProtein Ladder</b>	250μL/tube	2

## 4. Composition

Name	Main component
<b>EzProtein Ladder</b>	Glycerol, Urea,SDS, Tris-Phosphate

This product contains substances subject to notification that exceed the exemption quantities specified under the PRTR Act, the Poisonous and Deleterious Substances Control Act, and the Industrial Safety and Health Act. For details, please download and refer to the SDS for this product from the ATTO website (<https://www.atto.co.jp>).

## 5. Storage

Store frozen (-20 °C or below)

## 6. Disposal method

- Dispose of each reagent in accordance with the disposal method of your affiliated institution.

## 7. Items required other than this product

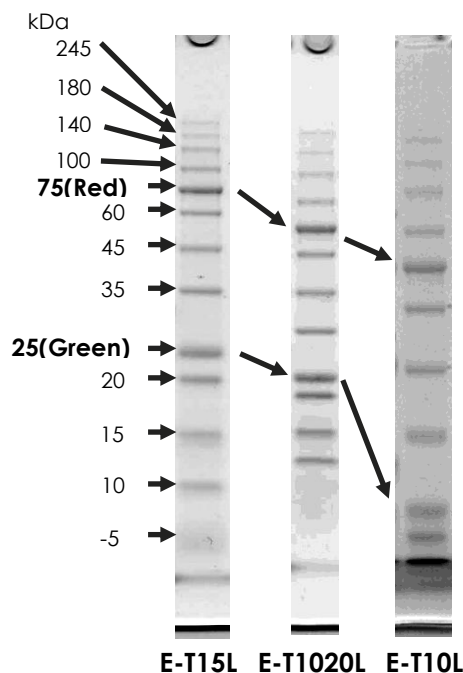
- Electrophoresis gel
- Electrophoresis reagents (sample buffer, electrode solution, etc.)
- Electrophoresis equipment
- Small centrifuge

## 8. How to use

- Remove **EzProtein Ladder** from the freezer.
- Dissolve **EzProtein Ladder** completely at room temperature (15-30 °C)
- For mini size gel, use 3-5μL per lane; for compact size gel, use 1.5-3μL per lane ; for Western blotting, use 1.5-2μL per lane.
- After using it, promptly freeze.

## 9. The separation pattern of EzProtein Ladder

The 75 kDa band is colored red, the 25 kDa band is colored green, and the other bands are colored blue.



E-T15L: e-PAGEL 15% gel  
E-T1020L: e-PAGEL 10-20% gradient gel  
E-T10L: e-PAGEL 10% gel


**ATTO CORPORATION**

3-2-2 Motoasakusa, Taito-ku, Tokyo 111-0041, JAPAN  
<https://www.attoeng.com/>



Contact