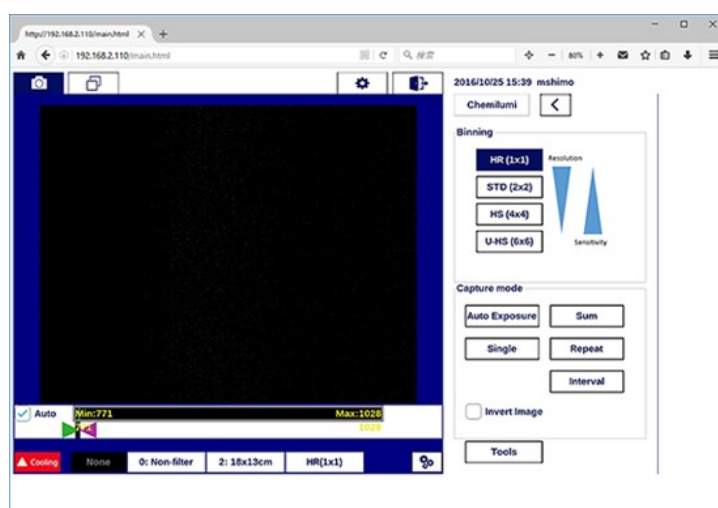


Chemiluminescent Imaging System

WSE-6300 LuminoGraph III

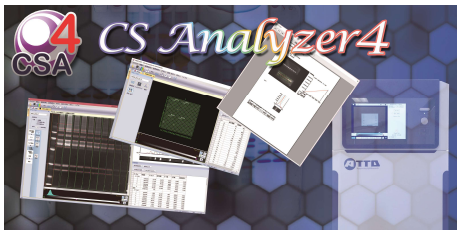
High Sensitivity Touch type System
Touch Panel Interface

1. User-friendly : 10 inch touch panel
2. Simple icon, available a captured image contrast adjustment
3. Auto exposing, Sum etc. Various detection mode
4. User registration and personal folder : Simple an image file management

Product Specification

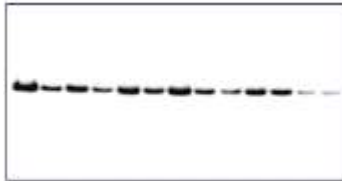
Model	Basic	All-in-One
CCD resolution	6 Mega pixels	
Pixel density	16-bit(65,536gray levels)	
Dynamic range	4 orders of magnitude	
Camera cooling system	3 Stage Peltier	
Camera cooling temperature	-35°C	
Camera lens	F/0.8	
Binning	1 x 1, 2 x 2, 4 x 4, 6 x 6 Binning	
Imaging area	max.260 x 200mm/100 x 75mm	
Focus	Auto focus	
On board computer system	60GB disk storage, 3USB ports	
Data Output	16-bit TIFF, 8-bit TIFF, 8-bit JPEG, 8-bit BMP	
Chemiluminescence Set	○	○
UV Set	x (Optional)	○
Cyan LED Epi light source	x (Optional)	○
White LED plat light source	○	○
Epi (RGB) light source	x(Unavailable)	○

CS Analyzer



- ▶ Windows PC installation
- ▶ House keeping protein ratio normalization function
- ▶ Free updating(Software) service
- ▶ Image analysis function
- ▶ Revision of distortion bands pattern
- ▶ Quantitative analysis of band signal intensities

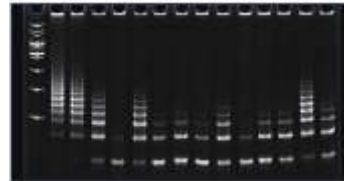
Applications



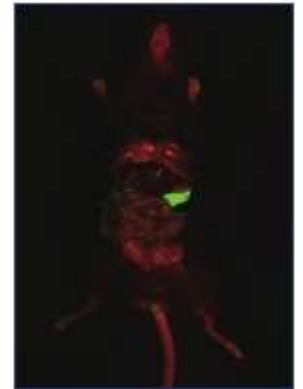
Western Blot



Protein Gel



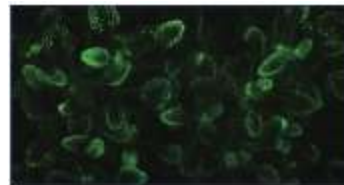
DNA Gel



in-vivo, ex-vivo Fluorescence



Dot Blot & Plate



Bioluminescence



in-Gel Fluorescence

Various Detection

DNA gel (All-in-One model)	RGB Fluorescent (All-in-One model)
<p>UV</p> <ul style="list-style-type: none"> ▶ Fluorescent DNA, Gel ▶ 312nm <p>Cyan LED Epi light source</p> <ul style="list-style-type: none"> ▶ Fluorescent DNA, Gel ▶ No damage to DNA sample ▶ EtBr, Safe dye ▶ Shield for Gel cutting 	<ul style="list-style-type: none"> ▶ Fluorescent (GFP) ▶ Fluorescent Protein ▶ in-vivo, ex-vivo Fluorescent ▶ Fluorescence Western Blot <p>BAND PASS FILTER</p> <div style="display: flex; justify-content: space-around;"> <div style="text-align: center;"> <p>535nm filter</p> <p>SYBR Green SYBR Safe SYBR Gold GFP FITC etc.</p> </div> <div style="text-align: center;"> <p>595nm filter</p> <p>Pro-Q diamond SYPRO Red SYPRO Ruby SYPRO Orange RFP CY3 etc.</p> </div> <div style="text-align: center;"> <p>680nm filter</p> <p>Oyster 650 5-CNF CY5 CY5.5 etc.</p> </div> </div>
<p>Stained gel (All-in-One model)</p> <p>White LED Flat light source</p> <ul style="list-style-type: none"> ▶ CBB, Stained Gel ▶ X-ray film Digital image 	<div style="display: flex; justify-content: space-between;"> <div style="width: 30%;"> <p>Blue (Max 472nm)</p> <p>SYBR Green SYBR Gold SYPRO Ruby SYPRO Orange GFP FITC etc.</p> </div> <div style="width: 30%;"> <p>Green (Max 528nm)</p> <p>Pro-Q diamond SYBR Safe SYPRO Red RFP CY3 etc.</p> </div> <div style="width: 30%;"> <p>Red (Max 615nm)</p> <p>Oyster 650 5-CNF CY5 CY5.5 etc.</p> </div> </div>



0,000 001 = 10⁻⁶ micro
 0,000 000 001 = 10⁻⁹ nano
 0,000 000 000 001 = 10⁻¹² pico
 0,000 000 000 000 001 = 10⁻¹⁵ femto
 0,000 000 000 000 000 001 = 10⁻¹⁸ ATTO